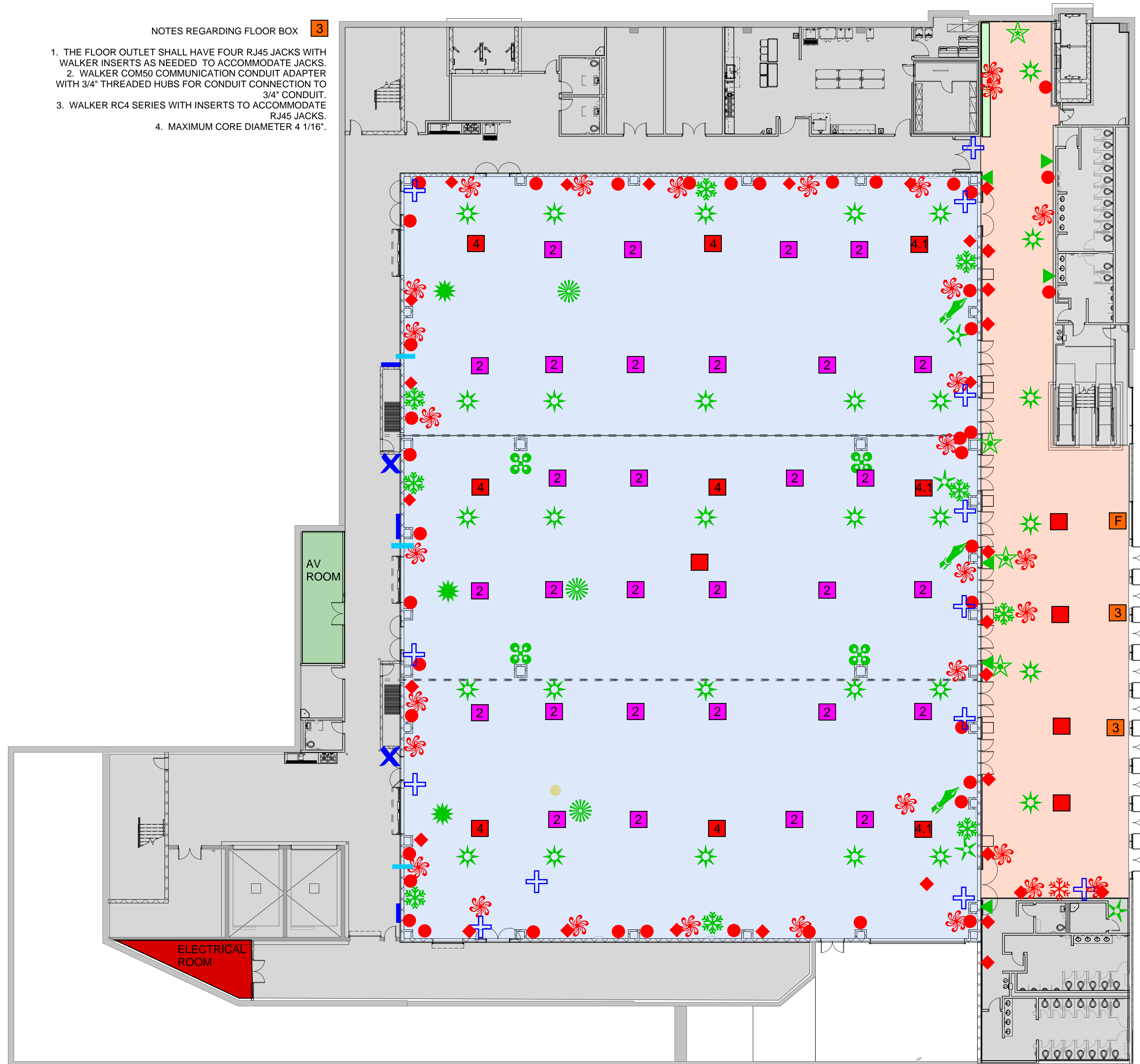


NOTES REGARDING FLOOR BOX **3**

1. THE FLOOR OUTLET SHALL HAVE FOUR RJ45 JACKS WITH WALKER INSERTS AS NEEDED TO ACCOMMODATE JACKS.
2. WALKER COM50 COMMUNICATION CONDUIT ADAPTER WITH 3/4" THREADED HUBS FOR CONDUIT CONNECTION TO 3/4" CONDUIT.
3. WALKER RC4 SERIES WITH INSERTS TO ACCOMMODATE RJ45 JACKS.
4. MAXIMUM CORE DIAMETER 4 1/16".



- AV 65" DISPLAY
- AV 42" DISPLAY
- AV 46" DISPLAY
- AV TOUCH SCREEN
- PTZ CAMERA
- AV VIDEO INPUT
- AV I/O PANEL
- AV PROJECTOR MOUNT(CEILING)
- AV PROJECTION SCREEN MOUNT(CEILING)
- DATA OUTLET MTD IN CEILING FOR USE WITH ACCESS POINT 2 CAT6 CABLES
- DATA 2 CAT6
- FLOOR BOX
E01: POWER - (1) 60A 208Y/120V; (2) 30A NEMA L21-30R, 208Y/120V; (6)20A, 120V NEMA 5-20R GFCI.
T01: TELECOM - (6) CAT6
- FLOOR BOX
E19: WATER CONNECTION
- FLOOR BOX
E23: POWER - (1) 30A NEMA L21-30R; (2) 20A, 120V NEMA 5-20R GFCI.
T01: TELECOM - (6) CAT6
- FLOOR BOX
E01: POWER - (1) 60A 208Y/120V, ANGLED PIN SLEEVE PLUG; (2) 30A NEMA L21-30R, 208Y/120V; (6)20A, 120V NEMA 5-20R GFCI.
- FLOOR BOX
AV FOR 42" DISPLAY
REFER TO NOTES ABOVE FOR MORE INFO
- FLOOR BOX
FOR FUTURE KIOSK & DISPLAY
- COMPANY SWITCH
E03: POWER - 100A, 208Y/120VCOMPANY SWITCH W/4" ACCESS THROUGH EXHIBITION HALL WALL
- CHARGING STATION
- CRESTON SCENE SELECTOR
- CRESTON DOCKING STATION/TABLET
- CRESTON PANEL
- R30-2 - 30 AMP RECEPTACLE
- R60-2 - 30 AMP RECEPTACLE
- DUPLEX RECEPTACLE
- DUPLEX RECEPTACLE WITH USB